

Restoration 9413/365

# SIESTA SHORES SECTION II

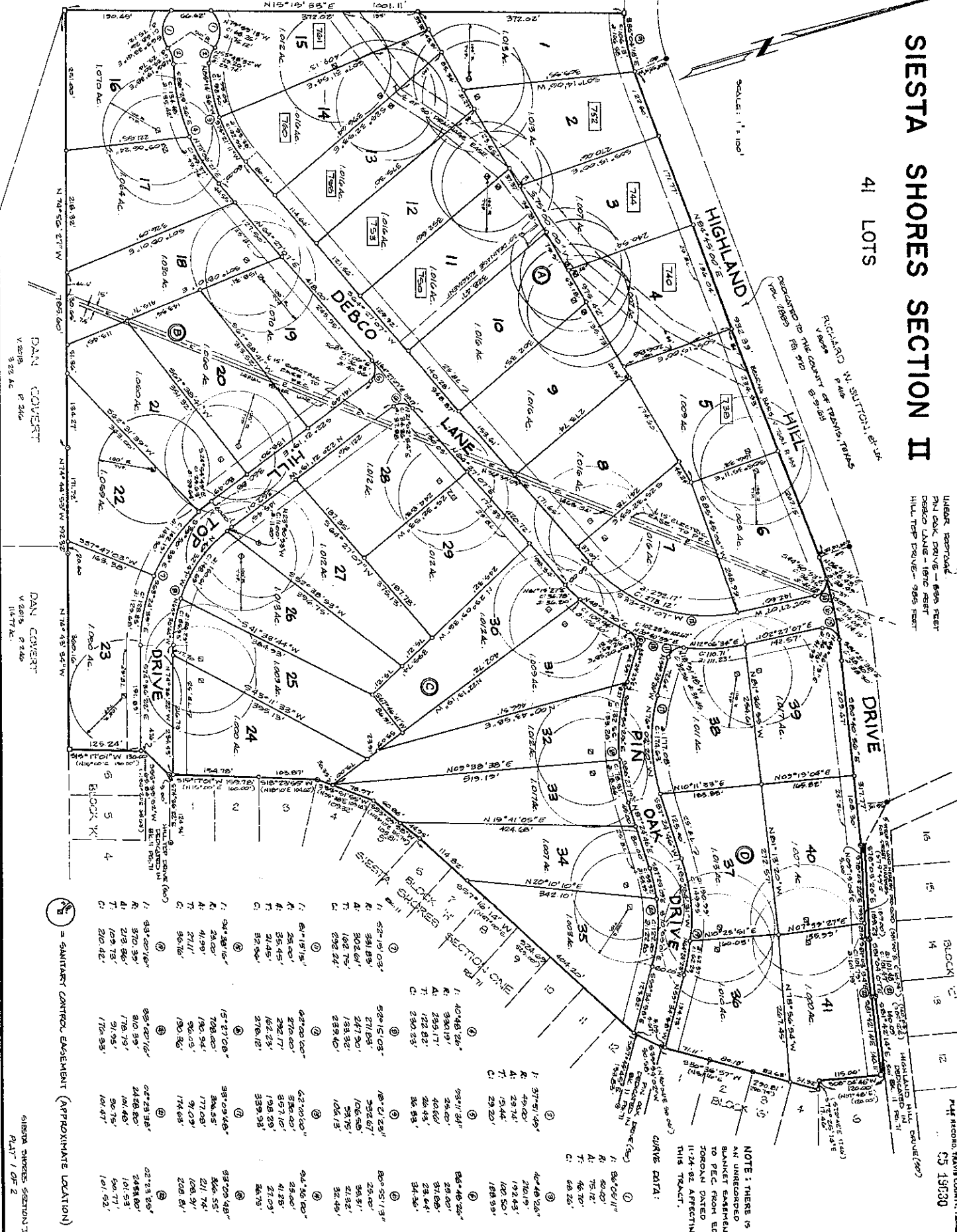
## 41 LOTS

UNBAR RESTAURANT  
PIN GOLF DRIVE - 899 FEET  
DEBCO LANE - 1870 FEET  
HILL TOP DRIVE - 985 FEET

RICHARD W. SUTTON, et ux  
V 2018 P 246  
DEDICATED TO THE COUNTY OF TARRANT, TEXAS

ROX BARNES COVERT &  
DUKE ANATHEWIS COVERT, et ux  
V 2571 P 1197  
100.24 Ac

SCALE: 1" = 100'



NOTE: THERE IS AN UNRECORDED BLANKET EASEMENT TO PEC FROM ED JORDAN DATED 11-24-82 AFFECTING THIS TRACT.

CURVE DATA:

Lot #	Area (Ac)	Bearing	Distance	Area (Ac)	Bearing	Distance
1	1.013	N 10° 15' 00" E	100.24	1.013	N 10° 15' 00" E	100.24
2	1.013	N 10° 15' 00" E	100.24	1.013	N 10° 15' 00" E	100.24
3	1.013	N 10° 15' 00" E	100.24	1.013	N 10° 15' 00" E	100.24
4	1.013	N 10° 15' 00" E	100.24	1.013	N 10° 15' 00" E	100.24
5	1.013	N 10° 15' 00" E	100.24	1.013	N 10° 15' 00" E	100.24
6	1.013	N 10° 15' 00" E	100.24	1.013	N 10° 15' 00" E	100.24
7	1.013	N 10° 15' 00" E	100.24	1.013	N 10° 15' 00" E	100.24
8	1.013	N 10° 15' 00" E	100.24	1.013	N 10° 15' 00" E	100.24
9	1.013	N 10° 15' 00" E	100.24	1.013	N 10° 15' 00" E	100.24
10	1.013	N 10° 15' 00" E	100.24	1.013	N 10° 15' 00" E	100.24
11	1.013	N 10° 15' 00" E	100.24	1.013	N 10° 15' 00" E	100.24
12	1.013	N 10° 15' 00" E	100.24	1.013	N 10° 15' 00" E	100.24
13	1.013	N 10° 15' 00" E	100.24	1.013	N 10° 15' 00" E	100.24
14	1.013	N 10° 15' 00" E	100.24	1.013	N 10° 15' 00" E	100.24
15	1.013	N 10° 15' 00" E	100.24	1.013	N 10° 15' 00" E	100.24
16	1.013	N 10° 15' 00" E	100.24	1.013	N 10° 15' 00" E	100.24
17	1.013	N 10° 15' 00" E	100.24	1.013	N 10° 15' 00" E	100.24
18	1.013	N 10° 15' 00" E	100.24	1.013	N 10° 15' 00" E	100.24
19	1.013	N 10° 15' 00" E	100.24	1.013	N 10° 15' 00" E	100.24
20	1.013	N 10° 15' 00" E	100.24	1.013	N 10° 15' 00" E	100.24
21	1.013	N 10° 15' 00" E	100.24	1.013	N 10° 15' 00" E	100.24
22	1.013	N 10° 15' 00" E	100.24	1.013	N 10° 15' 00" E	100.24
23	1.013	N 10° 15' 00" E	100.24	1.013	N 10° 15' 00" E	100.24
24	1.013	N 10° 15' 00" E	100.24	1.013	N 10° 15' 00" E	100.24
25	1.013	N 10° 15' 00" E	100.24	1.013	N 10° 15' 00" E	100.24
26	1.013	N 10° 15' 00" E	100.24	1.013	N 10° 15' 00" E	100.24
27	1.013	N 10° 15' 00" E	100.24	1.013	N 10° 15' 00" E	100.24
28	1.013	N 10° 15' 00" E	100.24	1.013	N 10° 15' 00" E	100.24
29	1.013	N 10° 15' 00" E	100.24	1.013	N 10° 15' 00" E	100.24
30	1.013	N 10° 15' 00" E	100.24	1.013	N 10° 15' 00" E	100.24
31	1.013	N 10° 15' 00" E	100.24	1.013	N 10° 15' 00" E	100.24
32	1.013	N 10° 15' 00" E	100.24	1.013	N 10° 15' 00" E	100.24
33	1.013	N 10° 15' 00" E	100.24	1.013	N 10° 15' 00" E	100.24
34	1.013	N 10° 15' 00" E	100.24	1.013	N 10° 15' 00" E	100.24
35	1.013	N 10° 15' 00" E	100.24	1.013	N 10° 15' 00" E	100.24
36	1.013	N 10° 15' 00" E	100.24	1.013	N 10° 15' 00" E	100.24
37	1.013	N 10° 15' 00" E	100.24	1.013	N 10° 15' 00" E	100.24
38	1.013	N 10° 15' 00" E	100.24	1.013	N 10° 15' 00" E	100.24
39	1.013	N 10° 15' 00" E	100.24	1.013	N 10° 15' 00" E	100.24
40	1.013	N 10° 15' 00" E	100.24	1.013	N 10° 15' 00" E	100.24
41	1.013	N 10° 15' 00" E	100.24	1.013	N 10° 15' 00" E	100.24

① = SANITARY CONTROL EASEMENT (APPROXIMATE LOCATION)